



# **ELECTRICITY IS SOURCE OF LIFE**

**PREPARED BY ENGLISH TEACHER  
AUBAKIROVA F.K.**

# What is electricity?

**It is a form of energy resulting from the existence of charged particles (such as electrons or protons), either statically as an accumulation of charge or dynamically as a current or a state of thrilling excitement.**

# NEW WORDS

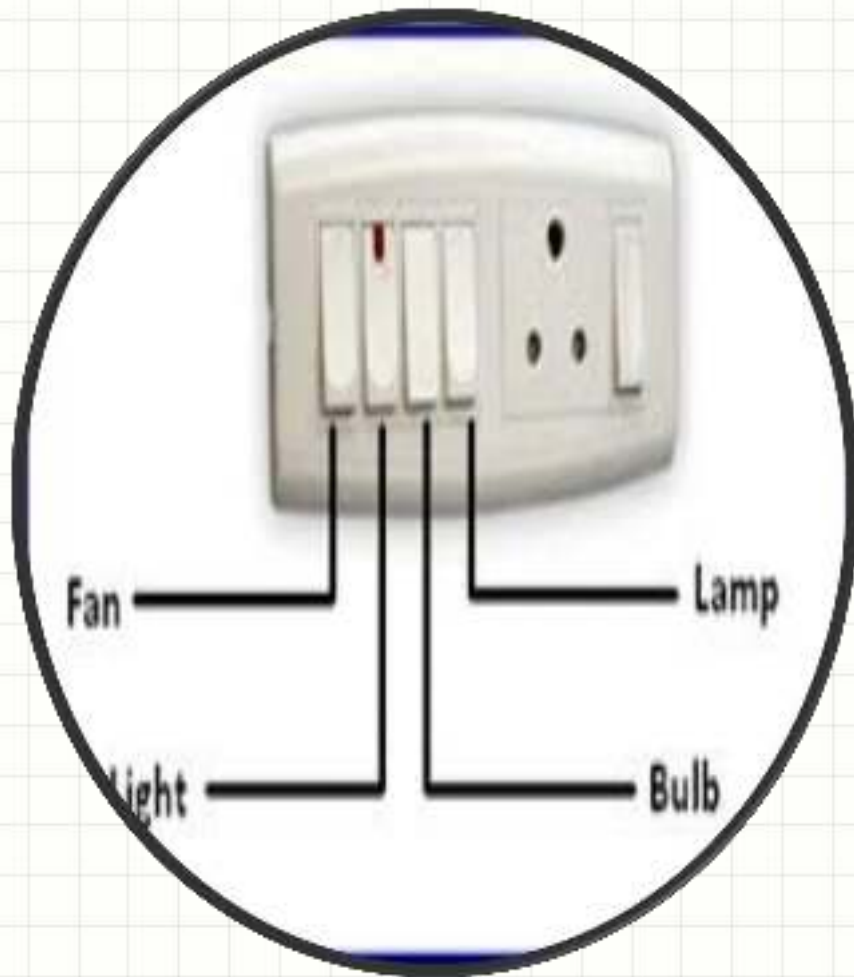
WORD	TRANSLATION
Current	Ток
Switch	Выключатель
Wire	Провод
Discharge	Разряд
Resistance	Сопротивление
Insulator	Изолятор
Transformer	Трансформатор
Condenser	Конденсатор
Voltage	Напряжение
Circuit breaker	Автоматический выключатель
Low voltage	Низкое напряжение
Medium voltage	Среднее напряжение
High voltage	Высокое напряжение



**A transformer** is a passive electrical device that transfers electrical energy from one electrical circuit to another, or multiple circuits

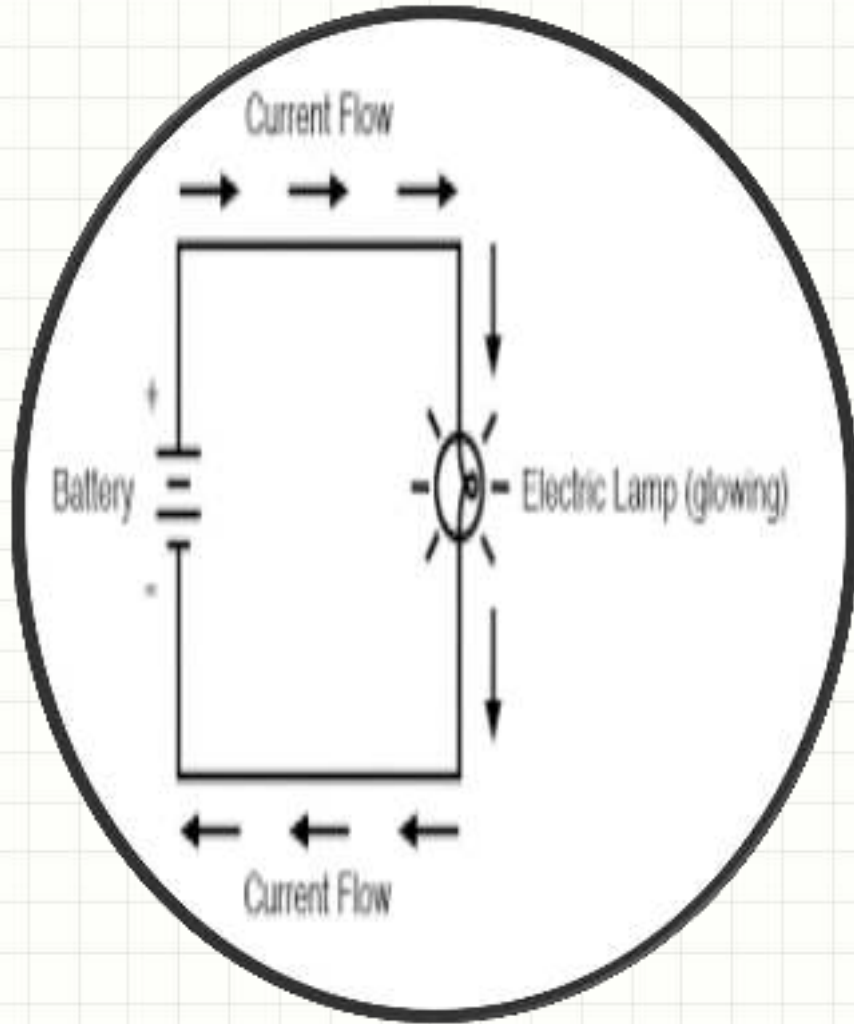


**An isolator** is a device used for isolating a circuit or equipment from a source of power.

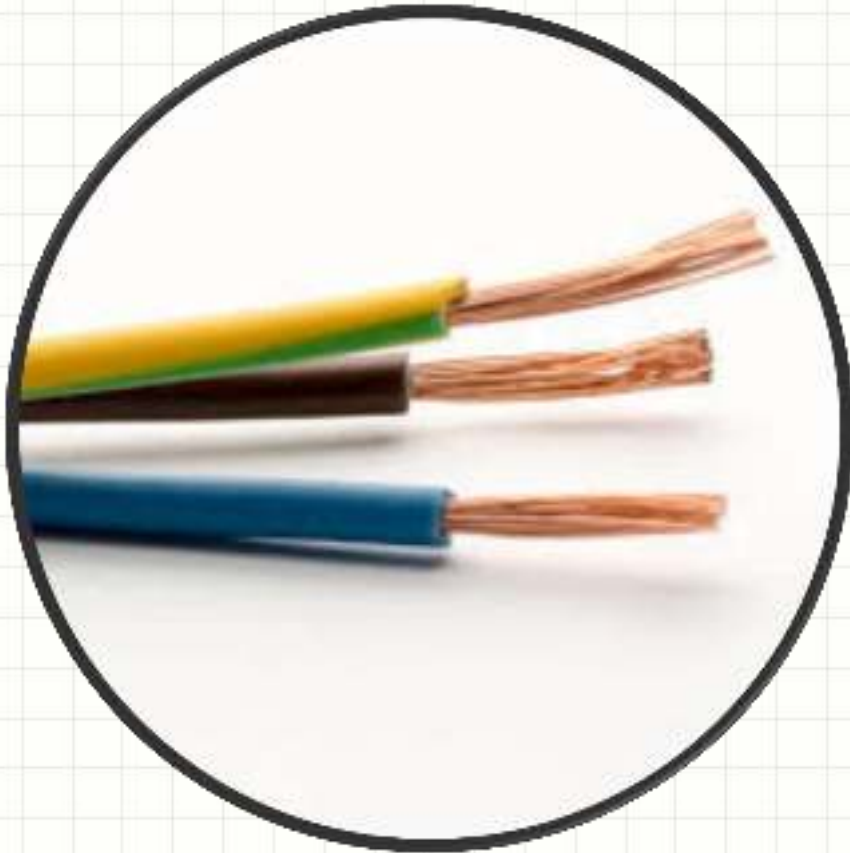


**Electric switch** is a device for opening and closing electrical circuits under normal load conditions, usually operated manually.



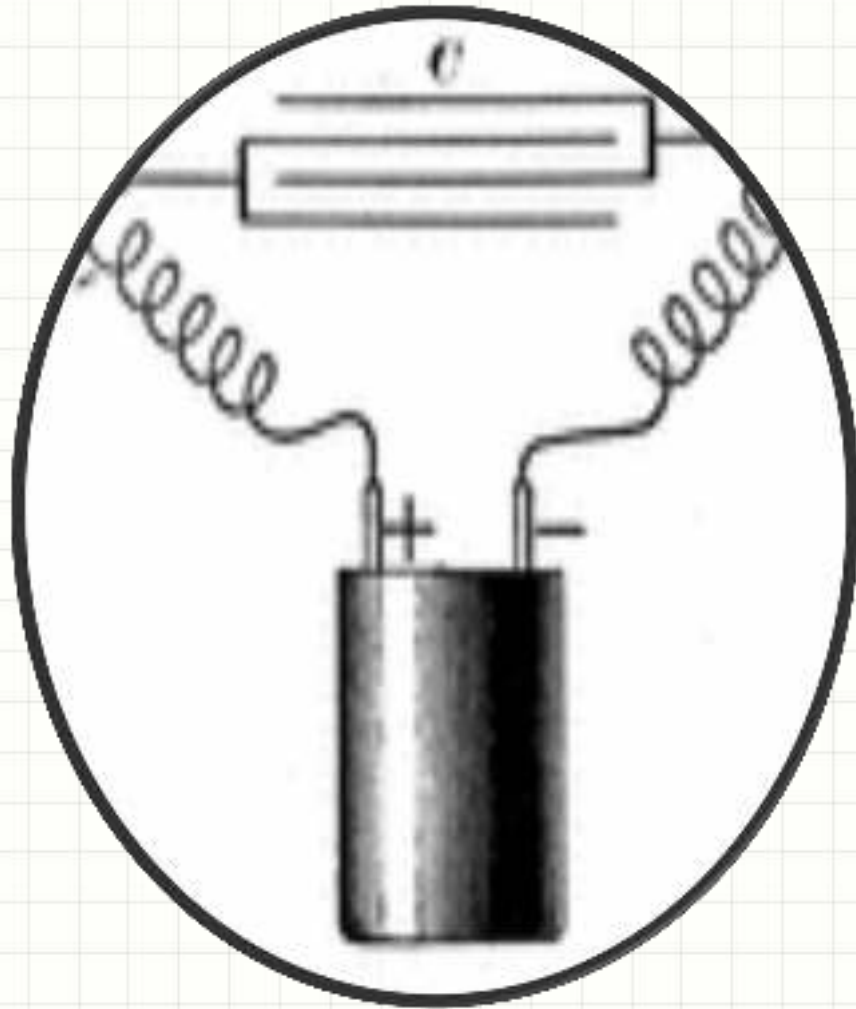


The **electrical resistance** of an object is a measure of its opposition to the flow of electric current.

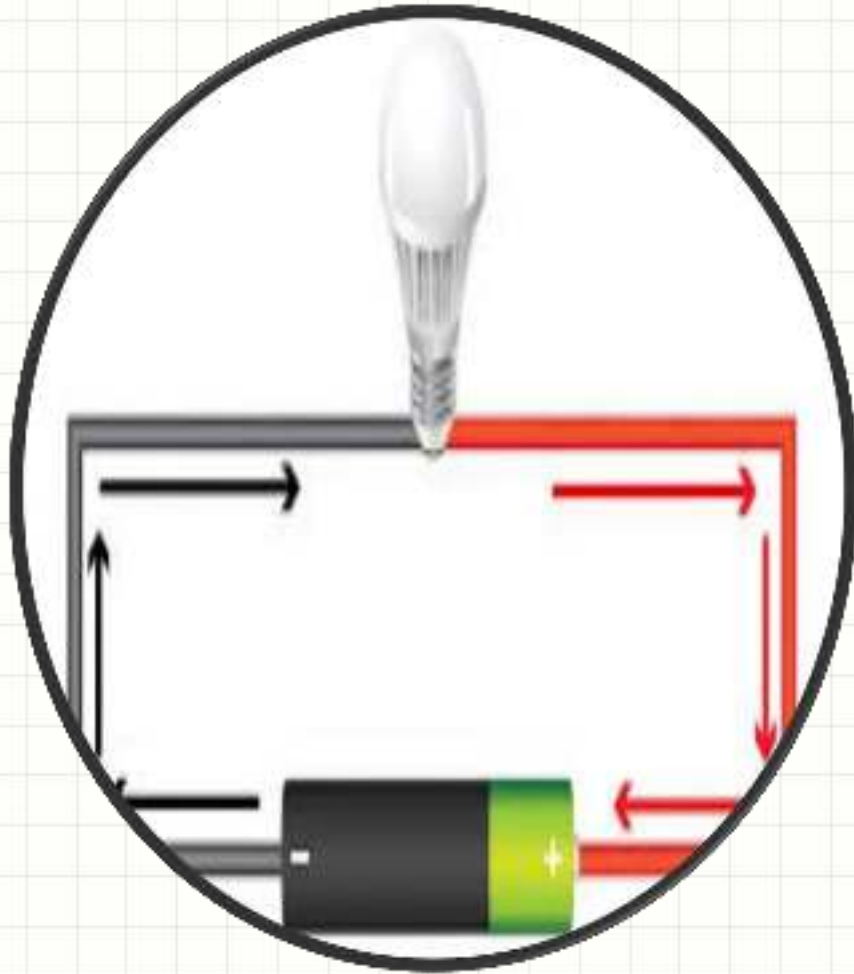


**A wire** is a single, usually cylindrical, flexible strand or rod of metal. Wires are used to bear mechanical loads or electricity and telecommunications signals.





**A condenser** is a passive two-terminal electrical component used to store energy electrostatically in an electric field.



**Voltage** = pressure,  
and it is measured in  
volts (V). ... In this  
dc circuit, the switch  
is closed (turned  
ON).

# ALESSANDRO VOLTA

Italian physicist **ALESSANDRO VOLTA** discovered that particular chemical reactions could produce electricity, and in 1800 he constructed the voltaic pile (an early electric battery) that produced a steady electric current, and so he was the first person to create a steady flow of electrical charge. Volta also created the first transmission of electricity by linking positively-charged and negatively-charged connectors and driving an electrical charge, or voltage, through them.



# GUESS THE REBUS



”

7= t